



TSX-V:**BMR** OTCQB:**BTRMF**

Investor Presentation

August 2024

BUILDING A MID-TIER COPPER PRODUCER



FORWARD-LOOKING STATEMENTS

This presentation includes certain “forward-looking statements” under applicable Canadian securities legislation and other securities laws. There can be no assurance that such statements will prove to be accurate, and actual results and future events could differ materially from those anticipated in such statements. Forward-looking statements reflect the beliefs, opinions and projections of the Company on the date the statements are made and are based upon a number of assumptions and estimates that, while considered reasonable by the Company, are inherently subject to significant business, economic, competitive, political and social uncertainties and contingencies. Many factors, both known and unknown, could cause actual results, performance, or achievements to be materially different from the results, performance or achievements that are or may be expressed or implied by such forward looking statements and the parties have made assumptions and estimates based on or related to many of these factors. Such factors include, without limitation, the ability of the Company to obtain sufficient financing to complete exploration and development activities, the ability of the Company to complete the Debenture offering, risks related to share price and market conditions, the inherent risks involved in the mining, exploration and development of mineral properties, the ability of the Company to meet its anticipated development schedule, government regulation and fluctuating metal prices. Accordingly, readers should not place undue reliance on forward-looking statements. The Company undertakes no obligation to update publicly or otherwise revise any forward-looking statements contained herein, whether as a result of new information or future events or otherwise, except as may be required by law. Past performance information given in this document is given for illustrative purposes only and should not be relied upon as (and is not) an indication of future performance. This presentation is not and does not purport to be an appraisal of the assets, stock, or business referenced herein. In this presentation, we may rely on and refer to information regarding the market for the Company’s services and products, which we have obtained from market research reports, analyst reports and other publicly available information. Although we believe that this information is reliable, we have not commissioned any of such information, we cannot guarantee the accuracy and completeness of this information, and we have not independently verified any of it. Some data is also based on our good faith estimates. The information set forth herein does not constitute an offer to sell or the solicitation of an offer to buy any securities of the Company, nor will there be any sale of the securities in any jurisdiction in which such offer, solicitation or sale would be unlawful prior to the registration or qualification under the securities laws of such jurisdiction.

Michael Schuler, P.Geo., Battery Mineral Resources Corp. Chile Exploration Manager, supervised the preparation of and approved the scientific and technical information pertaining to the Punitaqui Exploration Drill Program. Mr. Schuler is a qualified person as defined by National Instrument 43-101 - Standards of Disclosure for Mineral Projects.

P. J. Doyle, FAusIMM Battery Mineral Resources Corp. - Vice President Exploration, supervised the preparation of and approved the scientific and technical information in this presentation pertaining to the Canada Exploration Program. Information about data verification procedures used to support scientific and technical information on the Company’s Canadian properties presented herein, as well as with respect to the results of, processing and interpretation of exploration data.

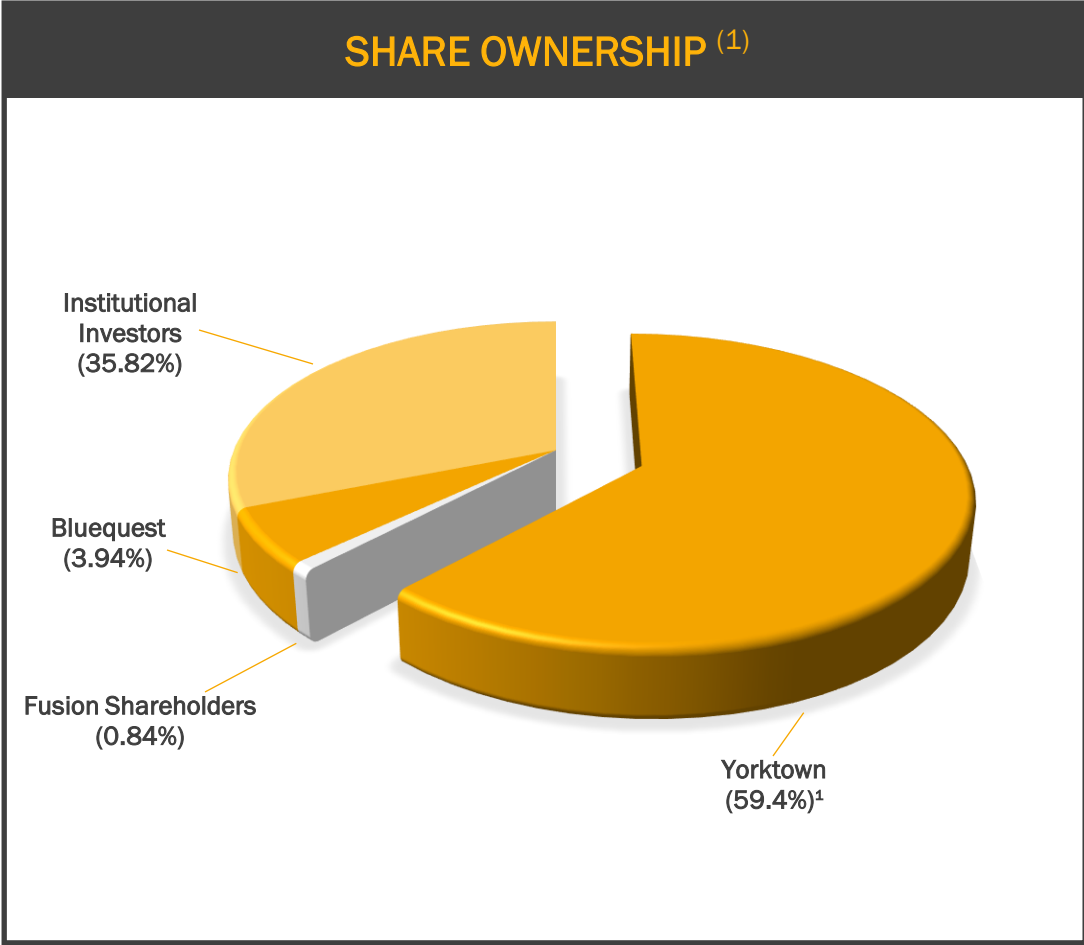
Mineral Resource estimates are available in each the following technical reports filed by the Company under the Company’s profile at www.sedar.com: “Technical Report on Cobalt Exploration Assets in Canada ” dated as of February 5, 2021, with an effective date of October 31, 2020, prepared by SRK Consulting – G Cole PGeo (APGO#1416).

“Technical Report on the Panamint Valley Lithium Project, Panamint Valley, California” dated as of March 25, 2018, with an effective date of November 16, 2017, prepared by Donald Hains, P.Geo, of Hains Engineering Company Limited.

CAPITAL STRUCTURE

SUPPORTIVE SHAREHOLDER BASE

Shares Outstanding	180.8 M
Options (\$0.43-\$0.85)	9.72 M
Shares fully diluted	190.5 M
Cash Position (as of March 31, 2024)	C\$7.6M
Market Capitalization ⁽²⁾	C\$14.8M



(1) 96,378,740 of such Shares are registered in the name of Weston Energy, LLC (“Weston I”, and formerly held by Yorktown Energy Partners IV, L.P. and Yorktown Energy Partners VI, L.P.), 7,000,000 of such Shares are registered in the name of Weston Energy II, LLC (“Weston II”), and 4,200,000 of such Shares are registered in the name of Yorktown Energy Partners XI, L.P. (“Yorktown XI”). The outstanding voting securities of Weston I and Weston II are owned by Yorktown XI and affiliates of Yorktown Partners LLC. Yorktown Partners LLC manages the investment activities of various limited partnerships within the Yorktown group, including Yorktown XI. In addition, Yorkton Partners LLC and its affiliates hold US\$18,494,223.75 in convertible debentures issued by the Company.

(2) Average closing price over last 28 days (July 2nd, 2024 to Aug 9th, 2024)

ENERGY SERVICES INC.

WHOLLY-OWNED, PHOENIX BASED, GENERATING ~C\$5M IN EBITDA PER YEAR (*)

- ESI Energy Services Inc. (“ESI”) - business of renting and selling backfill separation solutions and services for mainline and small diameter pipeline construction, wind & solar utility scale construction projects, civil construction and telecom/utilities;
 - ESI’s wholly-owned U.S. subsidiary, Ozzie’s Inc. been an industry leader by producing the first pipeline padding machine in the 1980’s.
 - Grown the business while routinely generating free cash flows due to low sustaining capital requirements.
 - Provided US\$20 million of funding to BMR since 2021, to enable BMR to restart production at Punitaqui (including funding expenditures which were required prior to re-start).⁽¹⁾



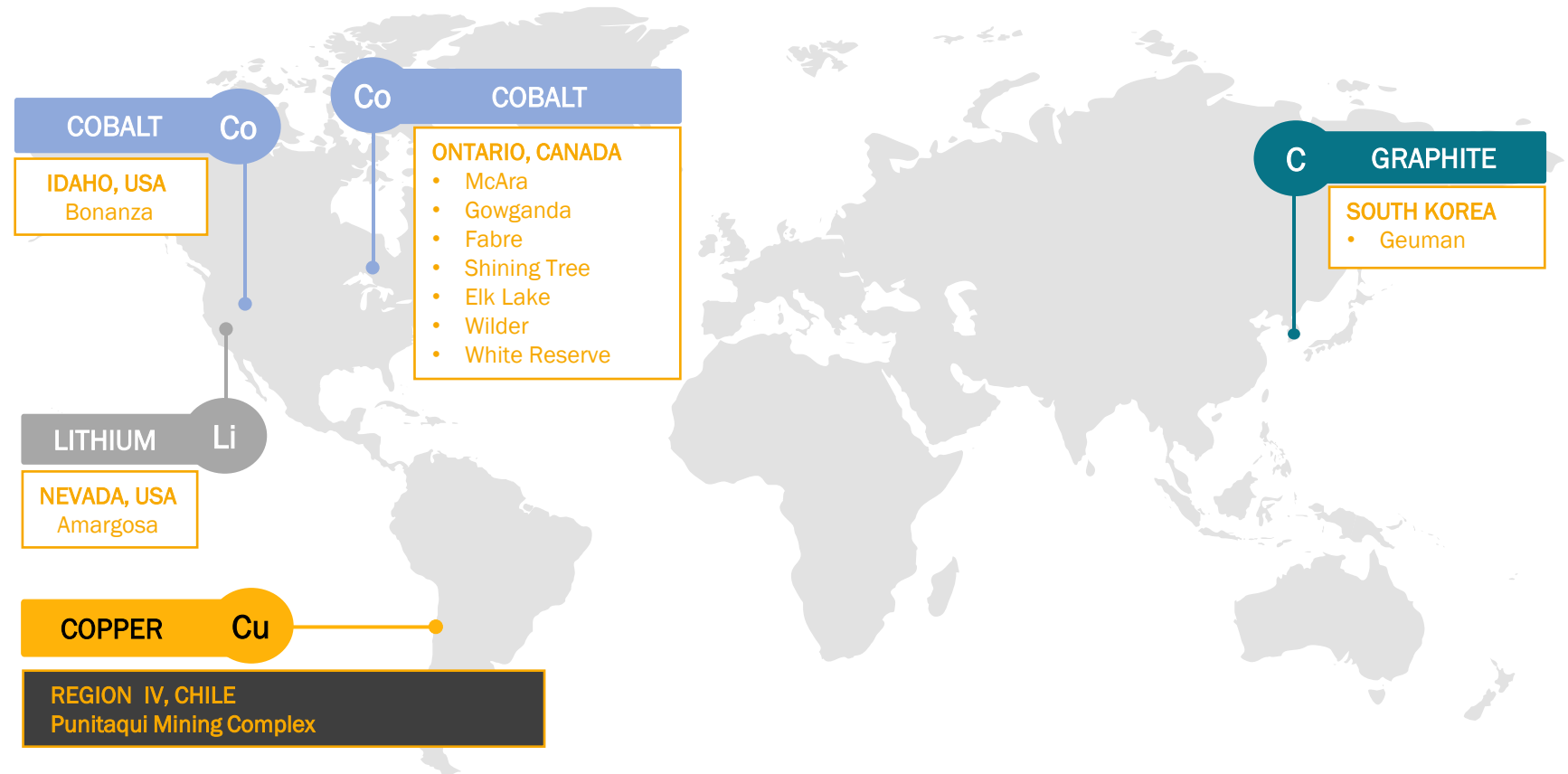
(*) ESI Energy Services Inc. historical results

(1) Based upon BMR company estimates

DIVERSE ASSET PORTFOLIO

HIGH-QUALITY EXPLORATION AND DEVELOPMENT PIPELINE

➤ Accretive exposure to copper and the global mega-trend of electrification.



PUNITAQUI MINE COMPLEX

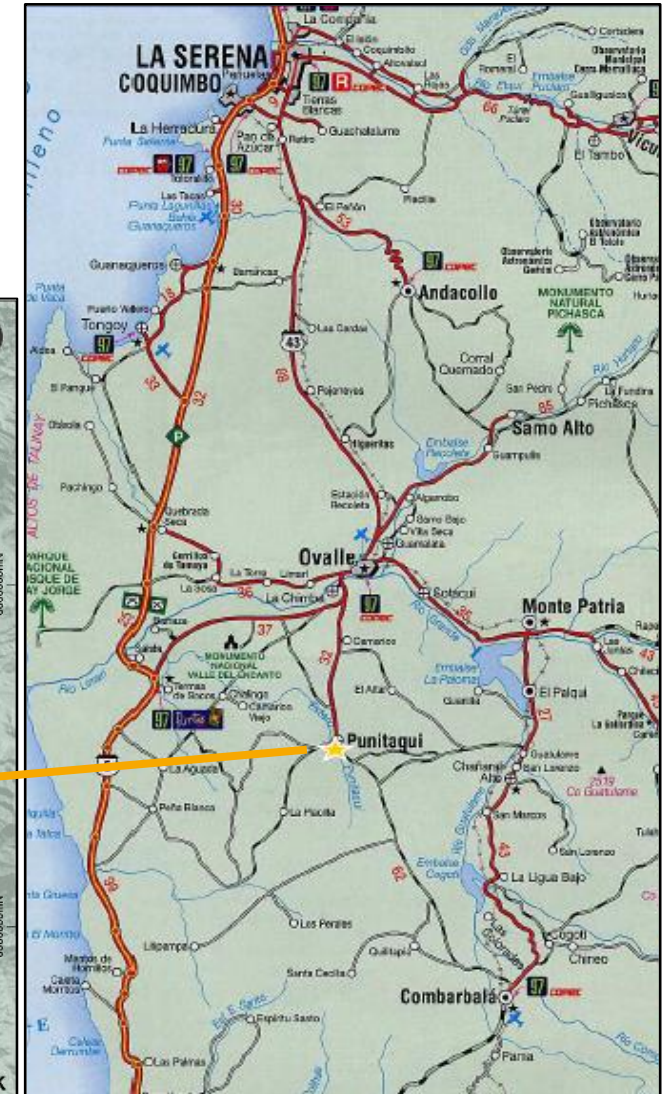
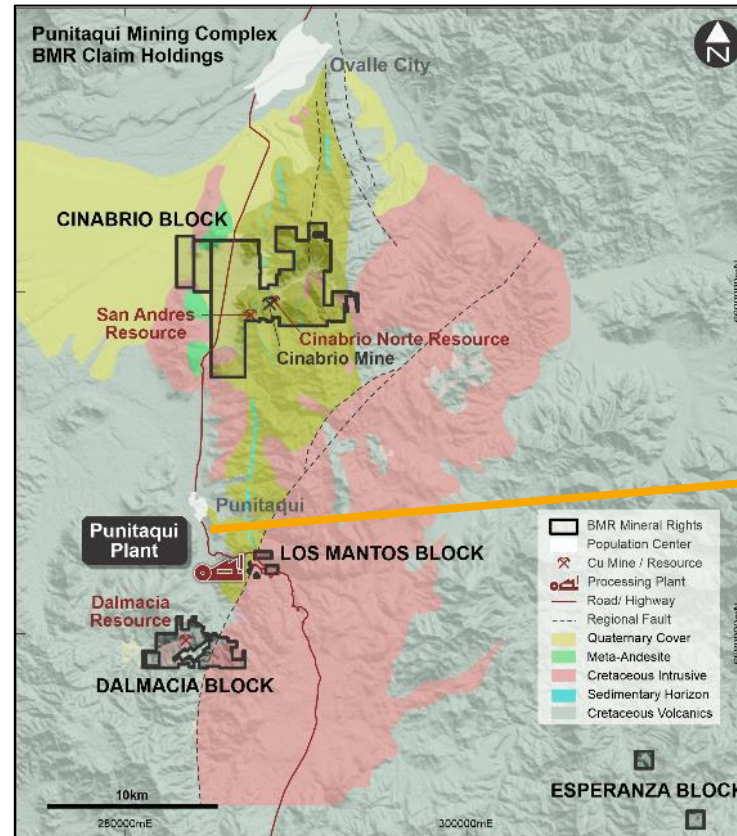
MINING & EXPLORATION CONCESSIONS

Location

- 120 km south of La Serena city and the port of Coquimbo, Chile.
- Process plant centrally located and is proximal to four satellite copper resources:
 - Cinabrio Mine
 - San Andres & Cinabrio Norte Resources
 - Dalmacia Resource
- All have drill ready resource targets and underground development.
- 9790 hectares of mineral claims with several blue-sky prospects.

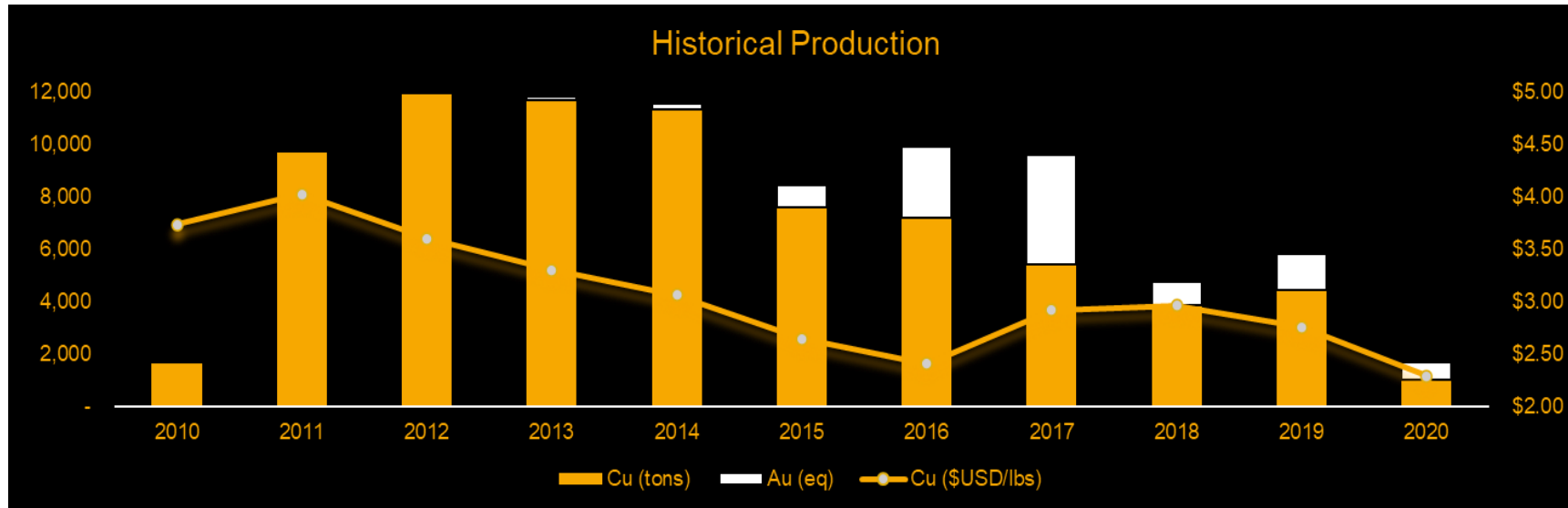
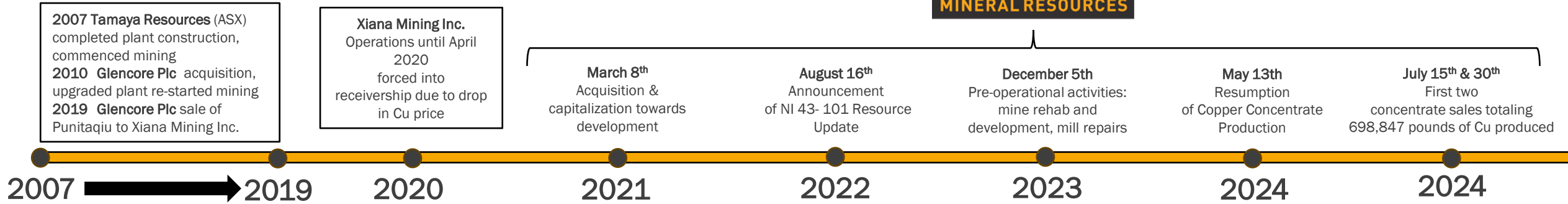
Infrastructure

- Water and power from local sources and local supplier, which is key advantage vs. most operators in Chile.
- 10+ years of mining and copper concentrate production.
- Easy access to inland or ocean concentrate shipping, supplies, services and workforce.



PUNITAQUI HISTORIC COPPER PRODUCTION

OVER TEN YEARS OF MINE OPERATING HISTORY ~20M TO 25M lb. Cu PER ANNUM



PUNITAQUI MINE COMPLEX

UNDERGROUND Cu-Au-Ag MINE - CHILE



MAY 2024 - RESUMPTION OF COPPER CONCENTRATE PRODUCTION

PUNITAQUI MINE COMPLEX

CAPACITY & PRODUCTION



CAPACITY

Copper process plant is currently permitted for 100,000 tpm (~3,333 tpd) with allowances up to 3,600 tpd



TAILINGS

Transitioning to dry tailings to extend life of storage areas and to be more water efficient



PROCESSING

Standard copper sulphide Crush/Grind/Float processing to produce a Cu-Au-Ag concentrate

PUNITAQUI – CURRENT RESOURCE

ADDITIONAL DRILLING PLANNED TO EXTEND MINE LIFE

- 6.17M tonnes Indicated at 1.14% Cu & 2.47 g/t Ag & 3.07M tonnes Inferred at 0.93% Cu and 2.64 g/t Ag.
- Currently evaluating the potential for pillar recovery using backfill at the Cinabrio Mine.
- Aggressive exploration drill program focussed on extensions to the known resources and new targets within our land holdings.
- Copper concentrator operations consume approximately 1M tonnes of resources per annum. Additional exploration planned during mine operations to extend resources inventory.

Indicated				
Zone	Cut-off (%CuT)	Tonnes	CuT (%)	Ag (g/t)
San Andres	0.70	1,736,000	1.06	4.83
Cinabrio	0.70	378,000	1.55	0.00
Cinabrio Pillars	0.70	1,027,000	1.51	0.00
Cinabrio Norte	0.70	833,000	1.01	4.57
Dalmacia	0.70	2,198,000	1.00	1.38
Total Indicated		6,172,000	1.14	2.47
Inferred				
Zone	Cut-off (%CuT)	Tonnes	CuT (%)	Ag (g/t)
San Andres	0.70	303,000	0.82	4.03
Cinabrio	0.70	90,000	0.98	0.00
Cinabrio Norte	0.70	1,078,000	0.98	4.91
Dalmacia	0.70	1,599,000	0.93	1.00
Total Inferred		3,070,000	0.93	2.64

*NI 43-101 Technical Report for the Punitaqui Copper Mining Complex Project, JDS Energy & Mining, Inc. effective as of 16 August 2022. based on 32,500m of BMR Phase 1 drilling and both drilling and mining data from prior operators.

NOTE: Historic work at the Cinabrio Mine did not include silver analyses therefore silver grades are assumed to be at a null grade for the purpose of completeness however, Management believes it is reasonable to assume that silver grades will be at a similar tenor as Cinabrio Norte.

PUNITAQUI – 25 KM MINERALIZED TREND

PROLIFIC DISTRICT WITH REGIONAL UPSIDE



- Redeploying cash flows towards other accretive investments.
- Only large sulphide processing plant in the Punitaqui region.

NUMEROUS COPPER DEPOSITS IN VARIOUS STAGES OF DEVELOPMENT

PUNITAQUI PRODUCTION – RECENT ACTIVITIES

DRIVING TOWARDS POSITIVE CASH FLOW

- After successful commissioning, the recently refurbished and upgraded mineral processing facility at Punitaqui started producing concentrate on May 13th, 2024.
- On July 15th, 2024, Battery supplied 503.74 dry metric tonnes (“DMT”) and on July 30th supplied 751.65 DMT’s for a total of **1,255 DMT’s of copper concentrates delivered in July 2024**, to Anglo’s Chagres smelter in Catemu, Chile:
- Concentrate produced at BMR’s Punitaqui copper flotation plant contained 25.98 and 24.22 percent copper, respectively.
- **698,847 total pounds of copper in concentrate produced in July 2024.**
- The copper concentrates were produced from copper smelting by-products (slags) supplied to BMR by Anglo.
- Goal of delivering approximately 1,400 DMT of copper concentrates per month in the near term and reaching up to 2,800 DMT of copper concentrate production per month, by year-end.

PUNITAQUI – STRONG INVESTMENT

REDEPLOYING CASH FLOW TOWARDS ACCRETIVE INVESTMENTS

- Potential annual EBITDA of US\$35-\$50M assuming C1 cash costs of \$2.60/lb (depending on realized copper price) ⁽¹⁾
- Re-rating in enterprise value to between 3.5x to 5.5x EBITDA ⁽¹⁾
- Low investment risk 10+ year operational history of a former producing mine built & operated by Glencore plc.
- Committed to redeploying cash flows towards other accretive investments.
- Underpinned by a projected robust outlook for copper.



BATTERY MINERAL TAKEAWAYS

GROWTH THROUGH ACQUISITION AND CASH FLOW



- Building a mid-tier copper producer;
 - Producing and selling copper concentrate as of May 14, 2024.
- Copper production growth through cash-flow, exploration and acquisitions in the world's top mining jurisdictions.
- Copper demand is surging *
- A battery mineral company with high-quality assets providing shareholders exposure to the global mega-trend of electrification.

BAT+ERY

MINERAL RESOURCES

TSX-V: BMR. OTCQB:BTRMF

Battery Mineral Resources Corp.
Suite 1900 - 1040 West Georgia Street
Vancouver, BC
Canada V6E 4H3



BUILDING A MID-TIER COPPER PRODUCER

APPENDIX



LEADERSHIP TEAM

MANAGEMENT	
Martin Kostuik B.Sc., MBA CEO & Director	<ul style="list-style-type: none"> 29+ years of diversified experience as a mining engineer & senior executive Operations, engineering, exploration & capital projects with various companies, including Luna Gold (Equinox), Taseko Mines, Rupert Resources, Barrick Gold Corp. & DMC Mining Services
Max Satel B. Comm CFO	<ul style="list-style-type: none"> 20+ years of experience in capital markets, project finance, financial reporting, corporate development & investor relations Previously with Arrow Exploration, Bordeaux Capital, Research Capital and CIBC World Markets
Peter Doyle B.Sc. (Hons.) VP Exploration	<ul style="list-style-type: none"> Over 40 years of experience in all aspects of mineral exploration from regional reconnaissance to project evaluation and development Previously with PT Freeport Indonesia & Gold Fields
Nestor Concha B.Sc. Mining Engineering, MBA Mine Manager, Punitaqui	<ul style="list-style-type: none"> 29+ years in mine operations & project management in open pit & underground mines in Central & South America. Has held senior roles at Caliber Mining's La Libertad gold mine, at Austral Gold's Casposo & Guanaco mines, at the Collahuasi JV open pit copper mine, at the Andacollo gold mine, at the El Peñón gold mine & at the Los Pelambres open pit copper mine
Hector Arenas B. Sc. Mining Engineering, MBA VP & Country Manager	<ul style="list-style-type: none"> Over 30 years of experience in the financial & mining industry as a mining engineer, senior executive & financial advisor Previously participated in several projects with various companies including Trevali Resources, Cardero Resources, & Indico Resources

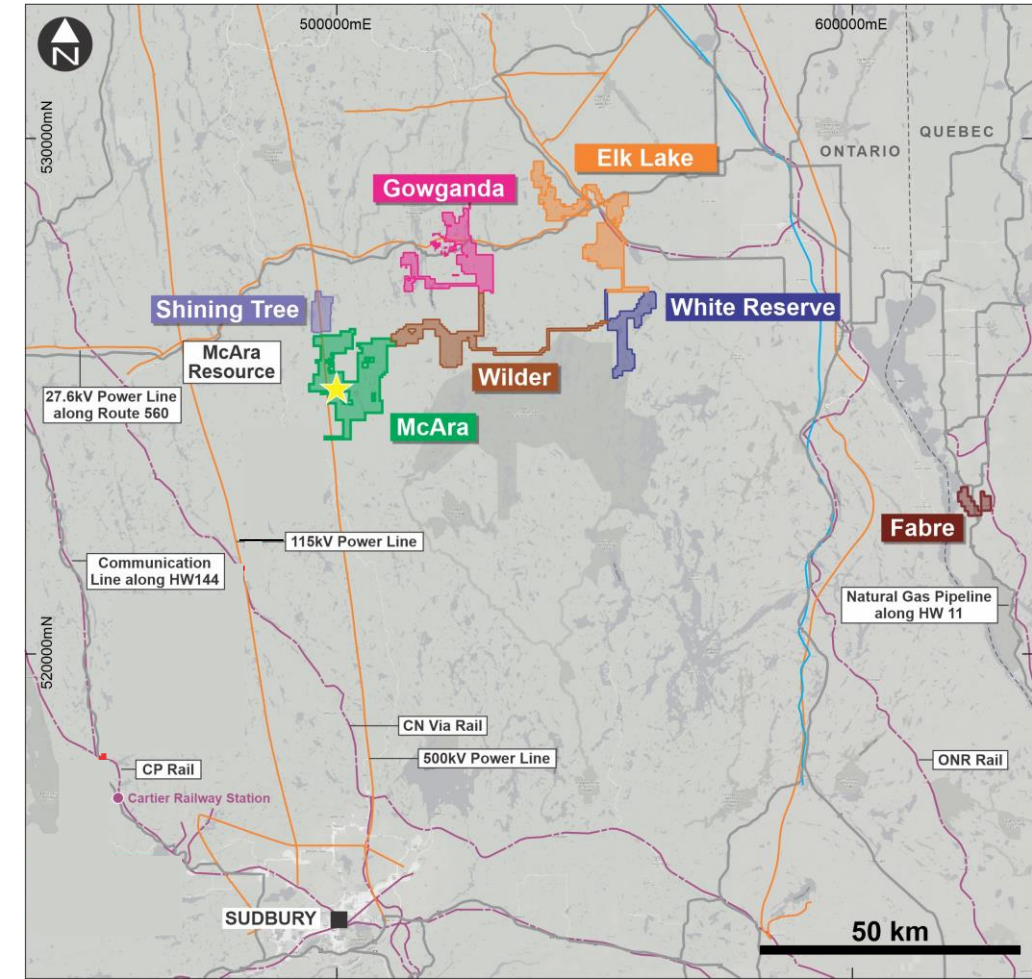
BOARD OF DIRECTORS	
Lazaros Nikeas Executive Chairman	<ul style="list-style-type: none"> 16+ years of strategy & capital markets advisory for resource, chemicals and industrial companies, with over US\$25 B of M&A transactions completed He is the principal investment manager of Weston Energy, a Yorktown Partners portfolio company with investments in energy minerals assets.
Dr. Stephen Dunmead Ph.D., M.Sc., B.Sc. Director	<ul style="list-style-type: none"> Former COO of NYSE-listed SWM International – led cobalt division Previously EVP Specialties for OM Group, responsible for their cobalt business for +10 years. 7 years as Chair of the Cobalt Institute
John Kiernan P.Eng., B.Sc., MBA Director	<ul style="list-style-type: none"> Over 30 years of mine operating, engineering and consulting experience; former mining research analyst with PI Financial Currently COO of Ascot Resources Ltd.
Joseph Tuso LL.B. Director	<ul style="list-style-type: none"> Over 20 years as a lawyer and currently a partner at Reed Smith LLP Previously COO and General Counsel at Stabilis Capital Management, an NYC-based investment adviser
Julia Aspillaga B. Comm Director	<ul style="list-style-type: none"> Managing Partner of Andeak Global Management, providing mining exploration services to several international companies. Worked as an executive of mining companies in multiple Latin American countries. Participated in the discovery & development of the San Cristobal gold mine in Chile with David Lowell and was manager of Bema Gold in Chile that developed the Refugio gold mine, later acquired by Kinross

BUILDING A MID-TIER COPPER PRODUCER

COBALT PROJECTS – NORTHERN ONTARIO

FAVORABLE GEOLOGY AND HISTORIC COBALT-SILVER ENDOWMENT

- Favorable access for exploration, development and mining suppliers and contractors in the Timmins and Sudbury as well as Rouyn and Val d’Or, Quebec.
- Prolific district > 70 mines produced 525Moz Ag and 50M lb. Co from 1904 – 1985
- Initial resource defined at McAra; M&I Resource of 1.1M lb. Co Eq. at Co grade of 1.47%¹ (Co price of \$16/lb.)
- **Gowganda** leases host four historic Ag-Co past producing mines which produced 60.1Moz Ag and 1.3M lb. Co from 1910–1989
 - Indicated Resource of 2.96Moz Ag in historic tailings²
- Opportunity for JV with discussions underway.



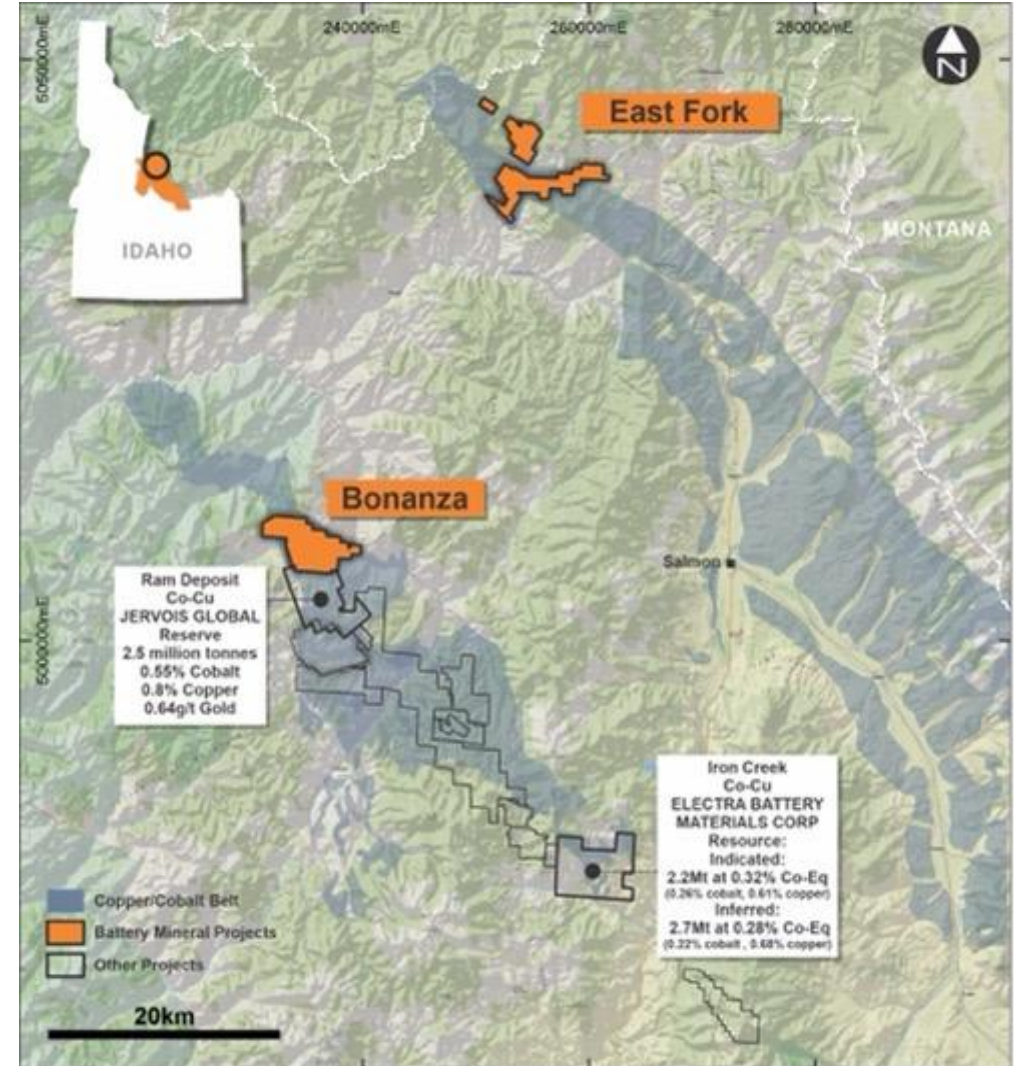
[1] Technical report filed by the Company under the Company's profile at www.sedar.com: Technical Report on Cobalt Exploration Assets in Canada " dated as of February 5, 2021, with an effective date of October 31, 2020, prepared by SRK Consulting – G Cole PGeo (APGO#1416).

[2] Tailings Resource Report for TEMEX Resources Report Entitled "GOWGANDA SILVER PROJECT INCLUDING A RESOURCE ESTIMATE OF THE SURFACE TAILINGS DEPOSIT" by GeoVector Management Inc. - Author Joe Campbell P. Geo Dated July 8th, 2011

COBALT PROJECTS – IDAHO COBALT BELT

BONANZA: HIGH-GRADE Co-Cu-Au PROPERTY

- Located in historic Blackbird Co-Cu Mine district. adjacent to Jervois Global Ltd.'s (JRV-TSXV) Cobalt Operations mine in the Bonanza project has drill ready targets, geological mapping, soil sampling, induced polarization (IP) survey and extensive channel sampling completed.
- 92 continuous channel samples in underground workings that returned a weighted average of 0.70% Co, 2.12% Cu, and 0.58 g/t Au over 17m from the central portion of the target area.
- Five additional 1m intervals yielded assays from 0.25% to 5.0% Co with peak assays of 6.91% Cu and 3.57 g/t Au.
- Multiple surface and subsurface shoots of Cu-Co mineralization hosted in and along contact with gabbro sill.
- Historic drilling encountered intercepts grading up to 0.76% Co and 5.15% Cu over a width of 1.5m from surface to 100m depth.



GRAPHITE PROJECTS – SOUTH KOREA

CRITICAL ROLE IN LITHIUM-ION BATTERY PRODUCTION

- Two former mines - high purity brownfield flake graphite deposits that supplied battery producers in country.
- Geumam Deposit with NI 43-101 compliant resource.
- Fine to jumbo flake graphite with >30% medium-jumbo flake.
- Numerous high priority exploration targets at both projects.
- Well-serviced by existing infrastructure.

Geumam Deposit March 2018 Mineral Resource Estimate

Mineral Resource	Cut Off Grade	Metric Tonnes	Grade C%	Contained Tonnes
Indicated	1.0% C	1,600,000	6.6	101,000
Inferred	1.0% C	5,600,000	5.5	306,000



Source: "Geumam and Taehwa Graphite Projects, South Korea, National Instrument 43-101 Technical Report" dated as of March 9, 2018, with an effective date of January 1, 2018, prepared by Robert Dennis, MAIG, Rodney Graham, and Andrew Newell, MAusIMM, CPMet and MEA, CP Eng., each of RPM Global.

(*) Currently waiting for application approval